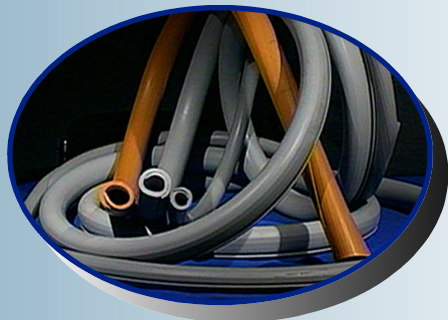




E/INSULATION™

Super tough silicone split line hose for distribution lines and substation cables and bus. Virtually permanent, flame and arc resistant, and won't discolor like EPDM "instant" insulation systems.



E/INSULATION™ is a **minimum 20kV phase-to-ground** flame and arc resistant coverup. Electrically insulating and made from High Temperature Vulcanized Silicone, it is split for ease of application. The silicone of **E/INSULATION™** is the same type commonly used for polymer or non-ceramic insulators being sold today.

The cross section of **E/INSULATION™** allows the substation electrician or the distribution lineman ease of application.

The hose is simply pulled and split apart allowing it to be quickly slipped onto round or angle substation cable or bus.

Because **E/INSULATION™** is formed from High Temperature Vulcanized Silicone, it is very pliable at all temperatures, yet it is tough and robust to allow extremely rough handling, the abuse of line trucks and hundreds of on and off applications.



Properties

Color	Gray, Black, Orange
Hardness, Shore A25 - 85
Durometer (ASTM D2240)65 ± 5
Tensile Strength, p.s.i. (ASTM D412)600
% Elongation @ Break (ASTM D412)400
Breaking Strength	Excellent
Brittle Point, °F (ASTM D74C)	-.90
* Dielectric Strength (ASTM D-149) v/mil550
U.V. Weathering/5000 hours(ASTM G53)	No Significant Change
Chemical Resistance	Excellent
Fire Retardance (UL94) ..	Self Extinguished in 15 sec.

Values listed above are typical properties and should not be used for preparation or specifications.

* Tested using 40 mil test slabs.

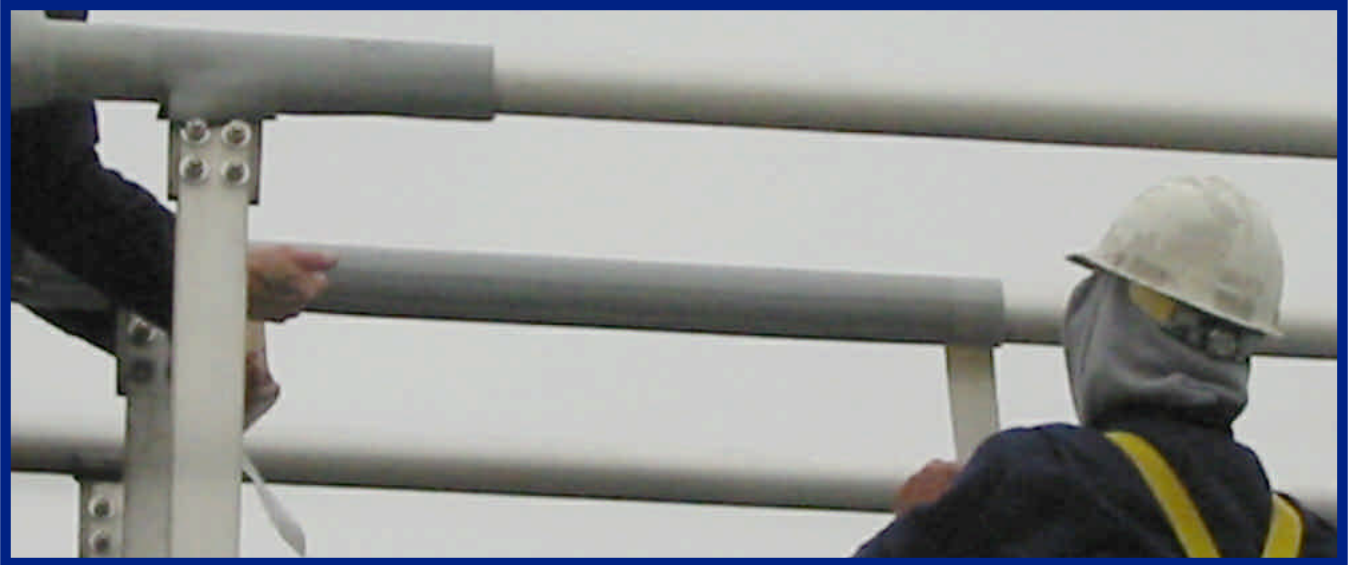
E/INSULATION™ is used for the purpose of:

- Preventing tree and animal contact outages on uninsulated cable
- Covering and insulating substation aluminum and copper bus and cable, as well as distribution lines..
- Residential weather head cable covering, replacing expensive line hose.

E/INSULATION™...

- CAN BE LEFT IN PLACE
- WILL NOT CHANGE COLOR OVER TIME
- WILL NOT CHALK
- PREVENTS VOLTAGE PUNCTURE FROM PHASE-TO-GROUND OR PHASE-TO-PHASE CONTACT

E/INSULATION



E/INSULATION - Use E/Insulation size that ID fits the OD of bus. Use proper shape of E/Insulation (round, angle, T-shape or flat). Simply split silicone E/Insulation tube and wrap around bus or conductor. On horizontal bus face slit down to prevent water from entering. For E/Insulation over 3-feet long it is recommended that E/Fusing Tape be used to hold section in place. Midsun recommends that E/Insulation be used to allow for a **minimum 18 to 20 inch clearance for phase to phase and phase to ground contacts.**

ORDERING INFORMATION

E/Insulation to Bare Aluminum Conductor Cross Reference

Conductor Size (AWG or kcmil)	Conductor OD (inches)	E/Insulation
6	0.198 in.	E/INS - 025
4, 2, 1, 1/0, 2/0	0.25 in. - 0.447 in.	E/INS - 050
3/0, 4/0, 266.8-336.4	0.502 in. - 0.741 in.	E/INS - 075
397.5, 447, 556.5, 605, 636	0.743 in. - 1.00 in.	E/INS - 100
666.6, 715.5, 795, 874.5, 900, 954	1.00 in. - 1.196 in.	E/INS - 125
1033.5, 1113, 1192.5, 1272, 1351.5, 1431, 1510.5, 1590, 1780, 2034.5, 2156, 2167,	1.212 in. - 1.735 in.	E/INS - 175
2312, 2515	1.802 in. - 1.88 in.	E/INS - 200

BUS	E/Insulation
2.5 in.	E/INS - 250
3.5 in.	E/INS - 350
4.5 in.	E/INS - 400

Angle BUS	E/Insulation
2.5 in.	E/ABC-2.50
3.25 in.	E/ABC-3.25
4.0 in.	E/ABC-4.00